

### Box Properties

--Description--

Name:

Type: Vented Box

Shape: Prism, slanted front

--Box Parameters--

Vb = 38, liters

V(total) = 42,73 liters

Fb = 38,4 Hz

F3 = 35,5 Hz

Fill = minimal

--Vents--

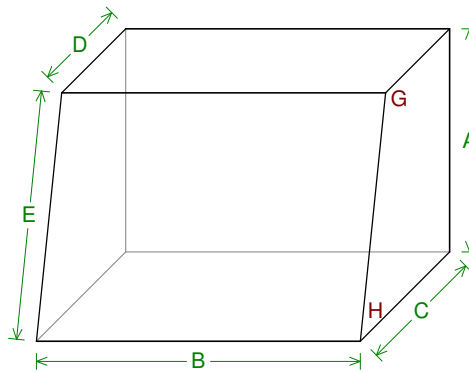
No. of Vents = 1

Vent shape = round

Vent ends = one flared

Dv = 68, mm

Lv = 147,2 mm



--External Dimensions--

A = 398, mm

B = 578, mm

C = 300,5 mm

D = 215,9 mm

E = 407,1 mm

--Internal Dimensions--

A = 360, mm

B = 540, mm

C = 258,1 mm

D = 181,6 mm

E = 368, mm

--Wall Thickness--

Front = 19, mm

Side = 19, mm

--Angles--

G = 102,°

H = 78,°

### Driver Properties

--Description--

Name: BX-P12

Type: Standard one-way driver

Company: Zachry

--Configuration--

**No. of Drivers = 1**

--Mechanical Parameters--

Fs = 31, Hz

Qms = 5,97

Vas = 57, liters

Mms = 155, g

Xmax = 9,5 mm

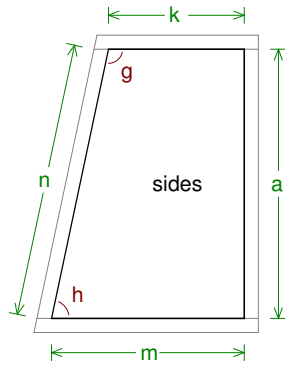
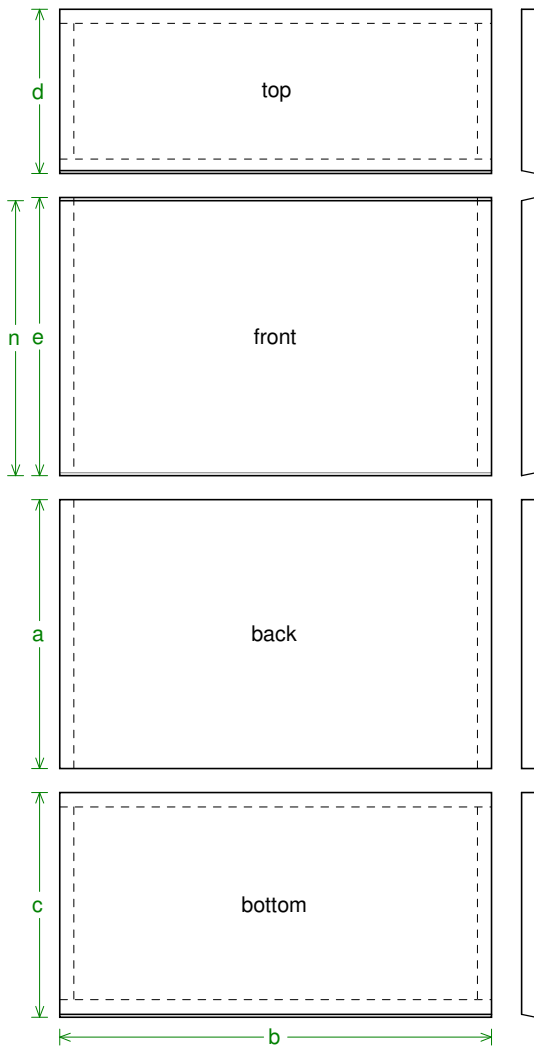
Sd = 490, sq.cm

--Electrical Parameters--

Qes = 0,66

--Electromech. Parameters--

Qts = 0,59



**Box Parts**

Box Shape: Slanted Front Prism

- 1 Top: height (d) = 220, mm  
width (b) = 578, mm  
thickness = 19, mm  
cut angle (front edge only) = 12,°
- 1 Front: total height (e) = 372,1 mm  
exposed surface height (n) = 368, mm  
width (b) = 578,, thickness = 19, mm  
top/bottom cut angles = ± 12,°
- 1 Back: height (a) = 360, mm  
width (b) = 578,, thickness = 19, mm
- 1 Bottom: height (c) = 300,5 mm  
width (b) = 578,, thickness = 19, mm  
cut angle (front edge only) = 12,°
- 2 Sides: top depth (k) = 181,6 mm  
height (a) = 360, mm  
bottom depth (m) = 258,1 mm  
front length (n) = 368, mm  
thickness = 19, mm  
Angle g = 102,°, Angle h = 78,°

--Driver Mounting--  
Mounting: Flush

- Vent Parts--
- 1 Duct: outside diameter (o) = 74,35 mm  
inside diameter (p) = 68, mm  
length (q) = 147,2 mm

