

### Box Properties

--Description--

Name:

Type: Vented Box

Shape: Prism, square

--Box Parameters--

Vb = 49, liters

V(total) = 53,69 liters

Fb = 34,74 Hz

F3 = 31,66 Hz

Fill = minimal

--Vents--

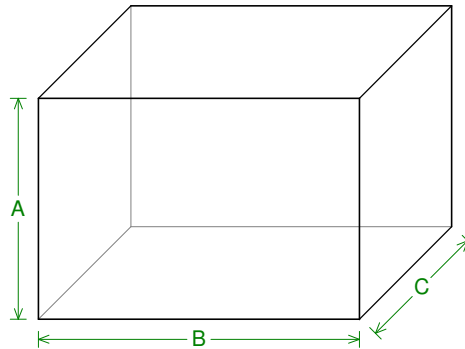
No. of Vents = 1

Vent shape = round

Vent ends = one flared

Dv = 68, mm

Lv = 136,6 mm



--External Dimensions--

A = 398, mm

B = 578, mm

C = 313,7 mm

--Internal Dimensions--

A = 360, mm

B = 540, mm

C = 275,7 mm

--Wall Thickness--

Front = 19, mm

Side = 19, mm

### Driver Properties

--Description--

Name: BX-P12

Type: Standard one-way driver

Company: Zachry

--Configuration--

**No. of Drivers = 1**

--Mechanical Parameters--

Fs = 31, Hz

Qms = 5,97

Vas = 57, liters

Mms = 155, g

Xmax = 9,5 mm

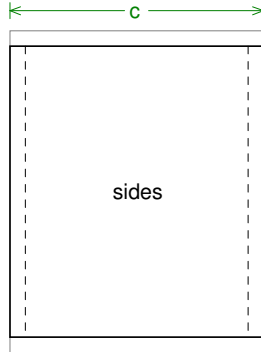
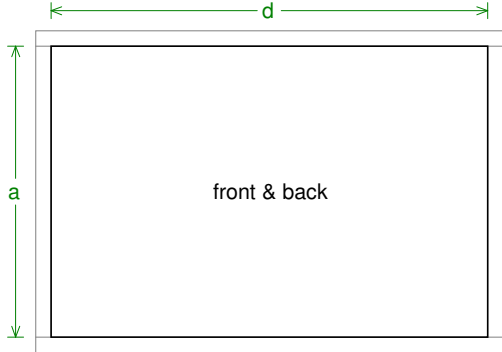
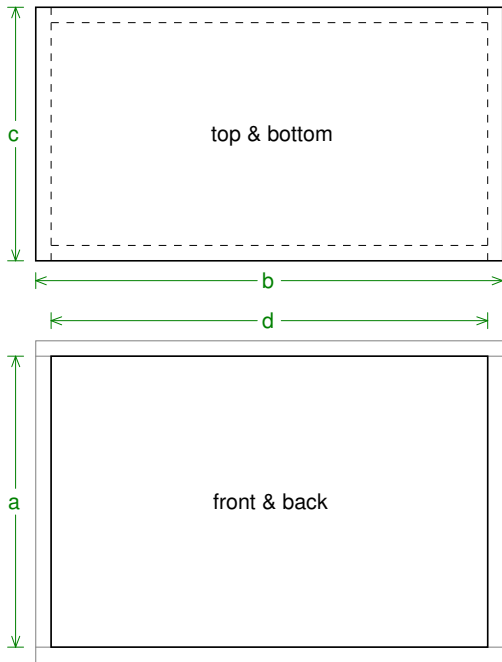
Sd = 490, sq.cm

--Electrical Parameters--

Qes = 0,66

--Electromech. Parameters--

Qts = 0,59



**Box Parts**

Box Shape: Square Prism

- 1 Top, 1 Bottom: depth (c) = 313,7 mm  
width (b) = 578,, thickness = 19, mm
- 1 Front, 1 Back: height (a) = 360, mm  
width (d) = 540,, thickness = 19, mm
- 2 Sides: height (a) = 360, mm  
depth (c) = 313,7, thickness = 19, mm

--Driver Mounting--  
Mounting: Flush

--Vent Parts--

- 1 Duct: outside diameter (e) = 74,35 mm  
inside diameter (g) = 68, mm  
length (h) = 136,6 mm

